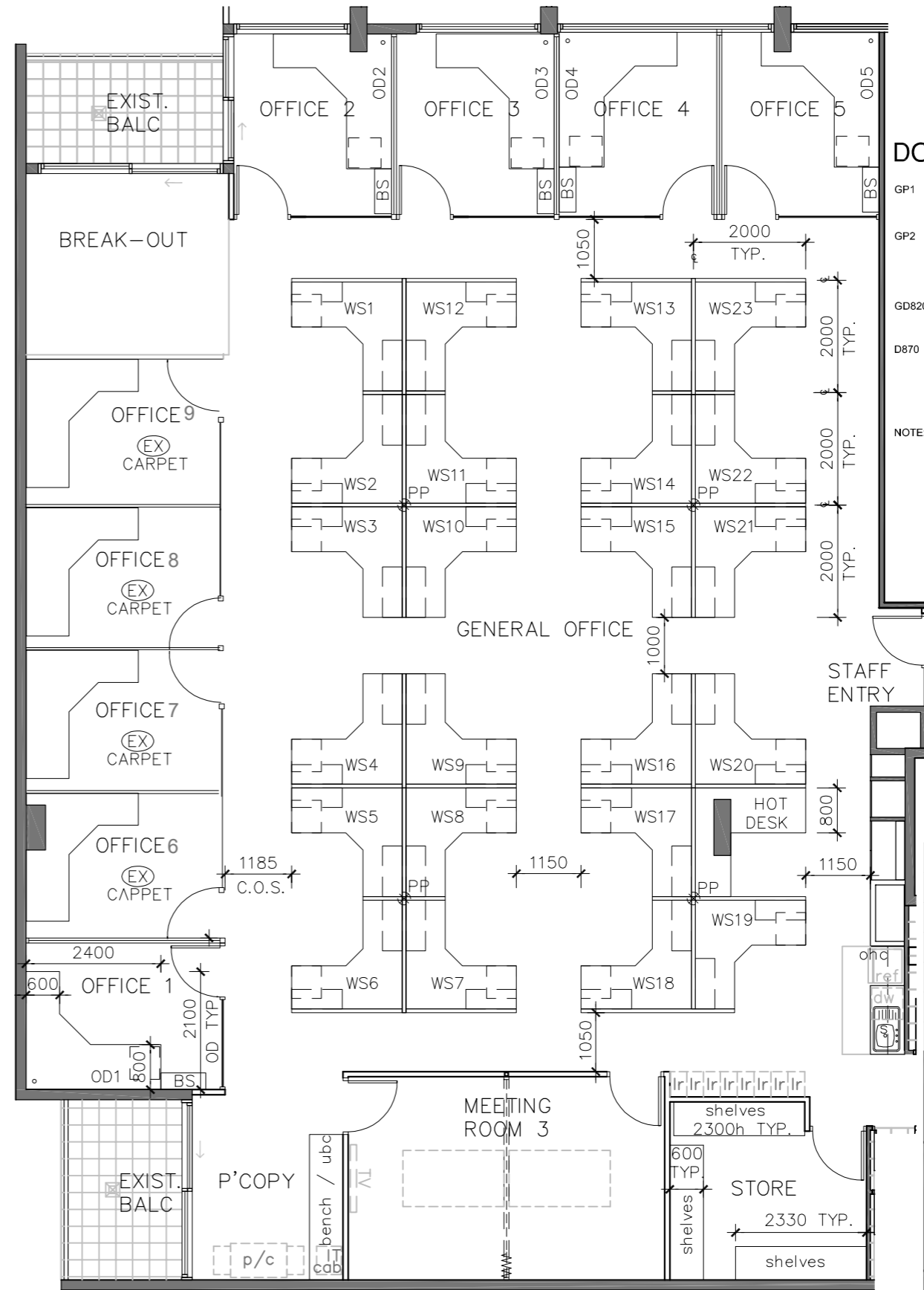
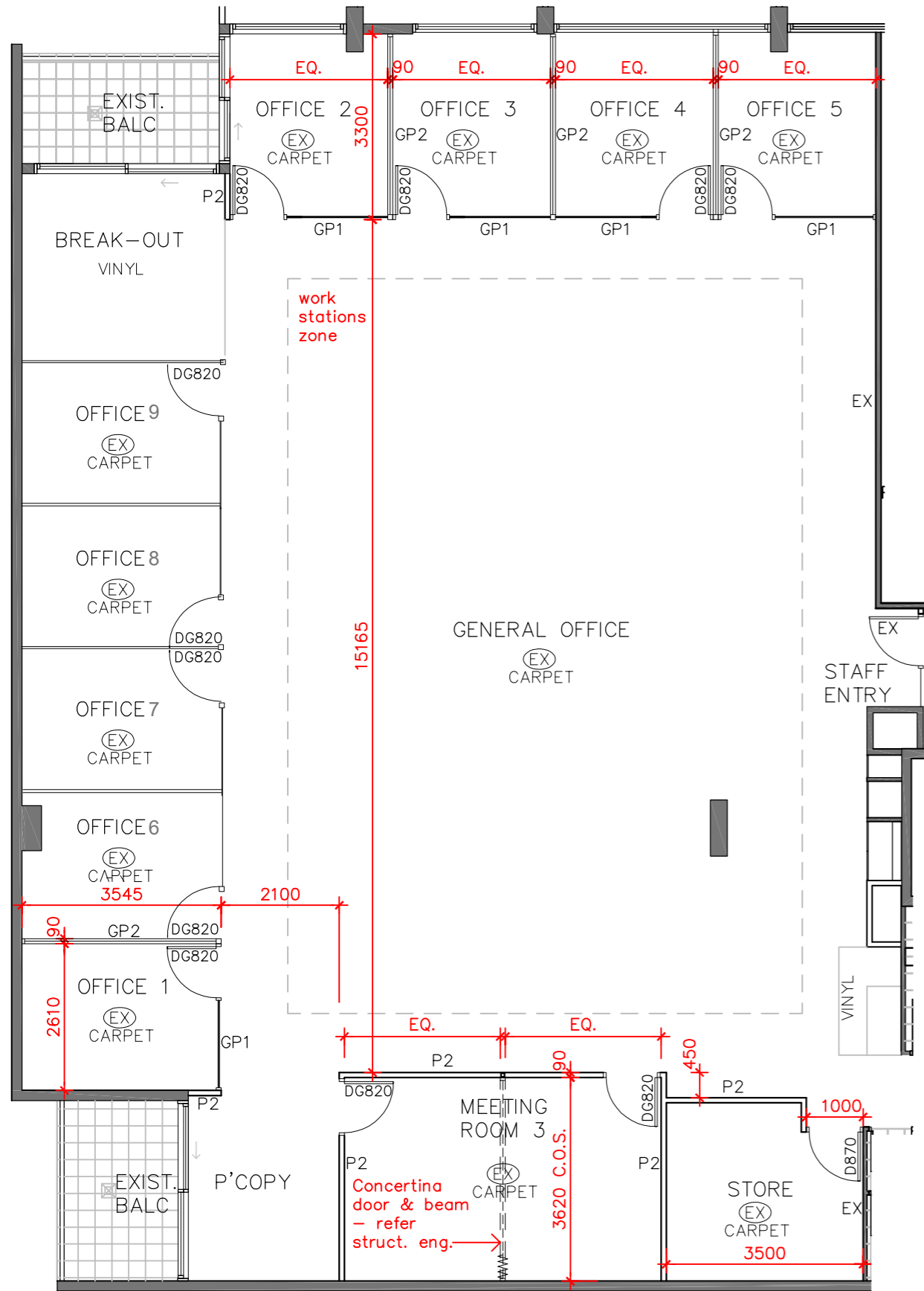


PARTITION SET OUT NOTES:

TYPICAL PARTITION WALL THICKNESS DIMENSION OF 90MM ASSUMES
64MM STUD FRAME AND 13MM PLASTERBOARD LININGS.

NOTES:

1. FURNITURE AND EQUIPMENT SHOWN IN GREY ARE SUPPLIED BY TENANT.
2. JOINERY DETAILS GENERALLY TO MATCH THE EXISTING LEVEL 5 FITOUT.



DOOR AND GLAZING LEGEND

- GP1 FULL HEIGHT GLASS PARTITION, OBSCURE FILM APPLIED FROM 600 TO 1800 AFFL
 - GP2 GLASS PARTITION UP TO U/S CEILING ABOVE 1250mm HIGH 64mm STUD WALL WITH 13mm PLASTERBOARD LINING. OBSCURE FILM APPLIED TO GLAZING FROM 1250 TO 1800 AFFL
 - DG820 820mm WIDE GLASS DOOR, OBSCURE FILM APPLIED FROM 600 TO 1800 AFFL
 - D870 FULL HEIGHT SOLID CORE TIMBER 870mm WIDE DOOR.
- NOTE: GLAZING AND OBSCURE FILM DETAILS TO MATCH EXISTING FIT-OUT ON LEVEL 5.
ALL DOORS TO BE LOCKABLE EXCEPT FOR THE MEETING ROOM DOORS.

REF	REVISION	DATE
B	For Tender	20.01.11
A	Prelim For Tender	22.12.10
REF	REVISION	DATE



**TENANCY FIT-OUTS
43 PEEL STREET
SOUTH BRISBANE**

K.C.B. - LEVEL 4

DRAWING NO: **CD.09B** DATE: **11.2010**

01 PARTITION TYPE & SETOUT PLAN

02 FURNITURE & JOINERY PLAN

